



## Front Elevation

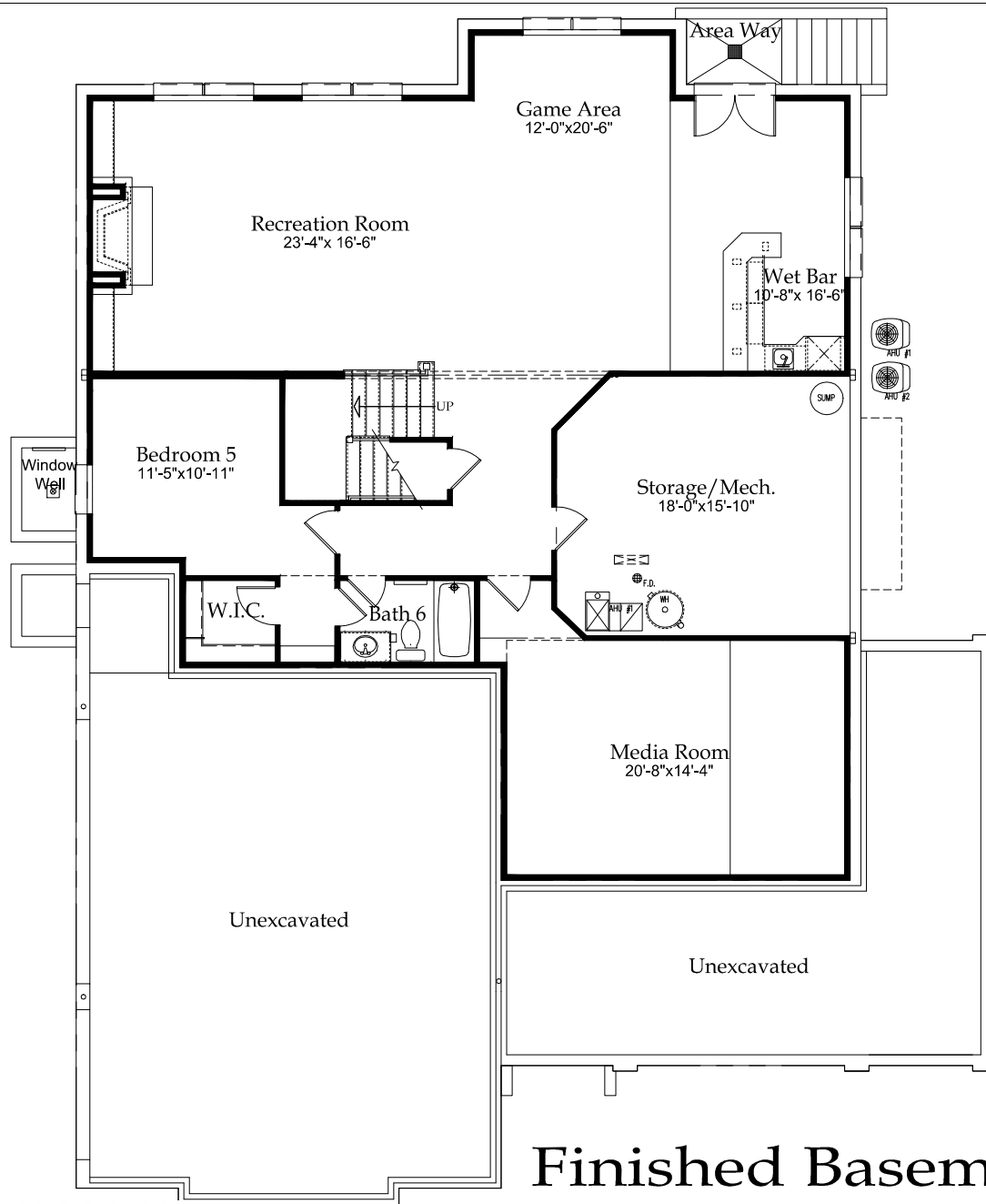
BASEMENT 1647 SQ.FT.  
FIRST FLOOR 2100 SQ.FT.  
SECOND FLOOR 2476 SQ.FT.  
TOTAL: 6223 SQ.FT.

### The Avalon

© 2013 Fisher Custom Homes



*In the interest of continuous improvements and to meet changing market conditions, we reserve the right to modify plans, dimensions, specifications or products without notice or obligation.*



## Finished Basement

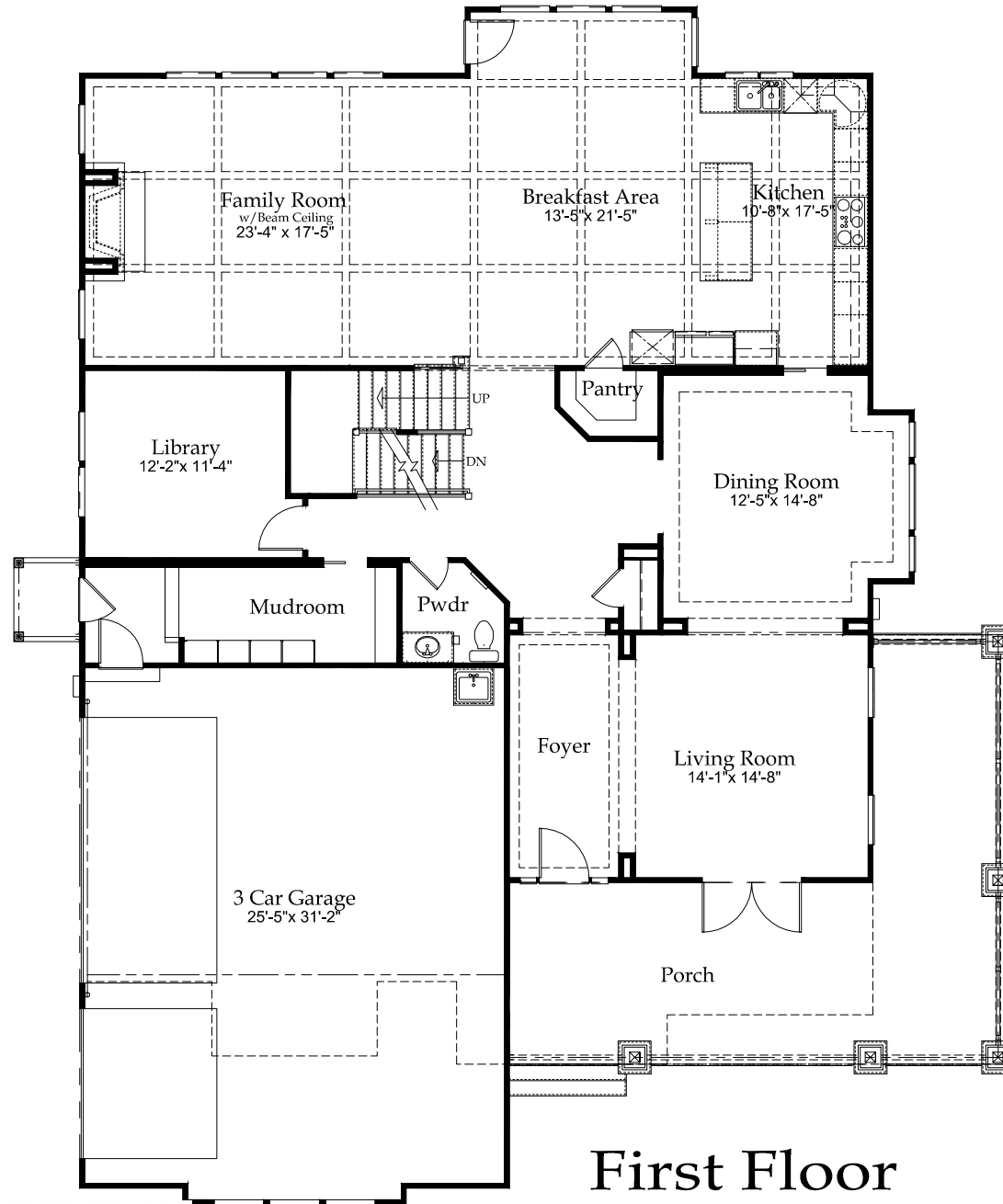


## The Avalon

© 2013 Fisher Custom Homes



*In the interest of continuous improvements and to meet changing market conditions, we reserve the right to modify plans, dimensions, specifications or products without notice or obligation.*



# First Floor

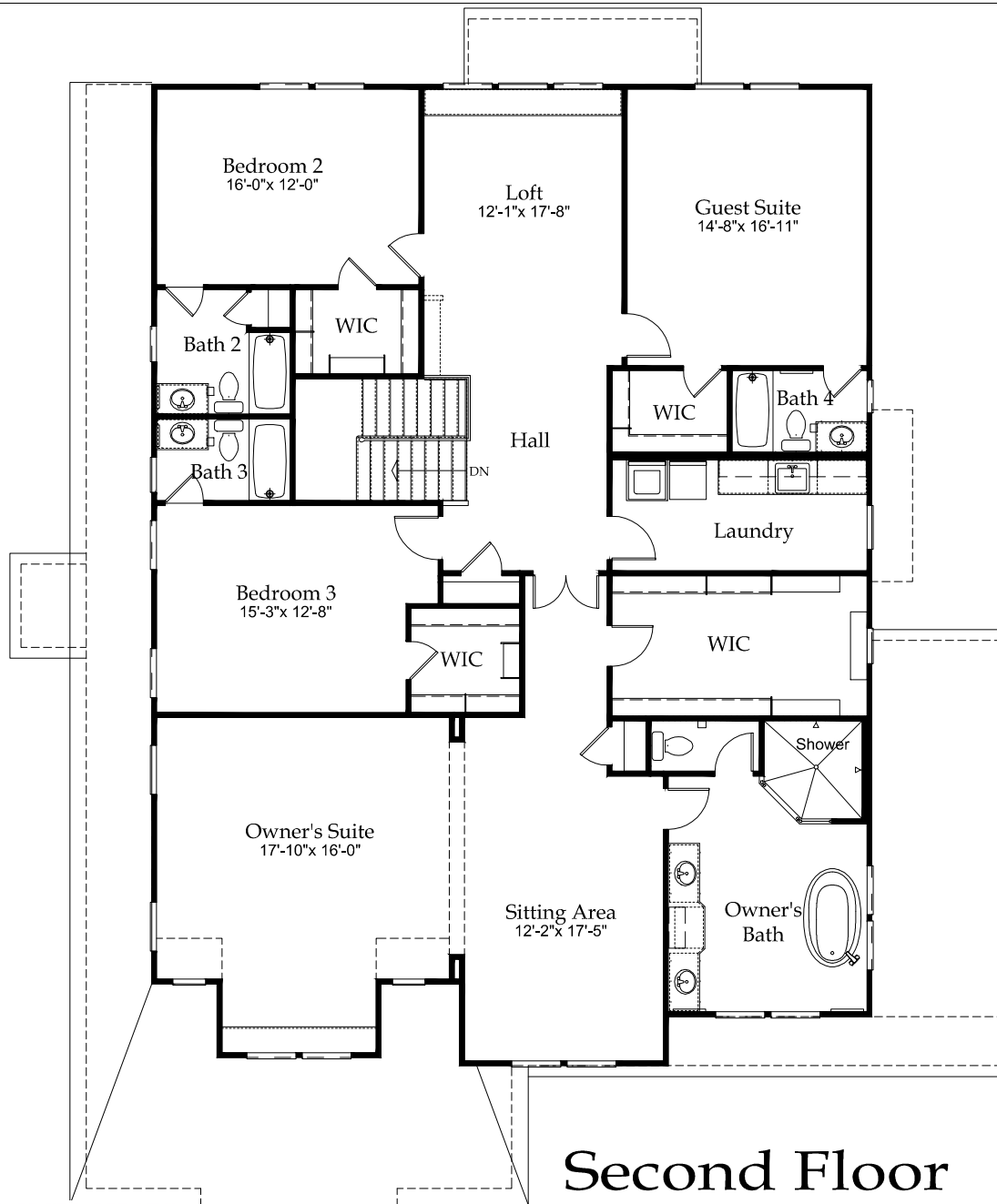


## The Avalon

© 2013 Fisher Custom Homes



*In the interest of continuous improvements and to meet changing market conditions, we reserve the right to modify plans, dimensions, specifications or products without notice or obligation.*



## Second Floor



## The Avalon

© 2013 Fisher Custom Homes



*In the interest of continuous improvements and to meet changing market conditions, we reserve the right to modify plans, dimensions, specifications or products without notice or obligation.*