



Front Elevation



6147 Farver Road

© 2018 Fisher Custom Homes



In the interest of continuous improvements and to meet changing market conditions, we reserve the right to modify plans, dimensions, specifications or products without notice or obligation.



Front Elevation

BASEMENT 2294 SQ.FT.
FIRST FLOOR 2481 SQ.FT.
SECOND FLOOR 2586 SQ.FT.
TOTAL: 7361 SQ.FT.



6147 Farver Road

© 2018 Fisher Custom Homes



In the interest of continuous improvements and to meet changing market conditions, we reserve the right to modify plans, dimensions, specifications or products without notice or obligation.



Front Elevation

BASEMENT 2294 SQ.FT.
FIRST FLOOR 2481 SQ.FT.
SECOND FLOOR 2586 SQ.FT.
TOTAL: 7361 SQ.FT.



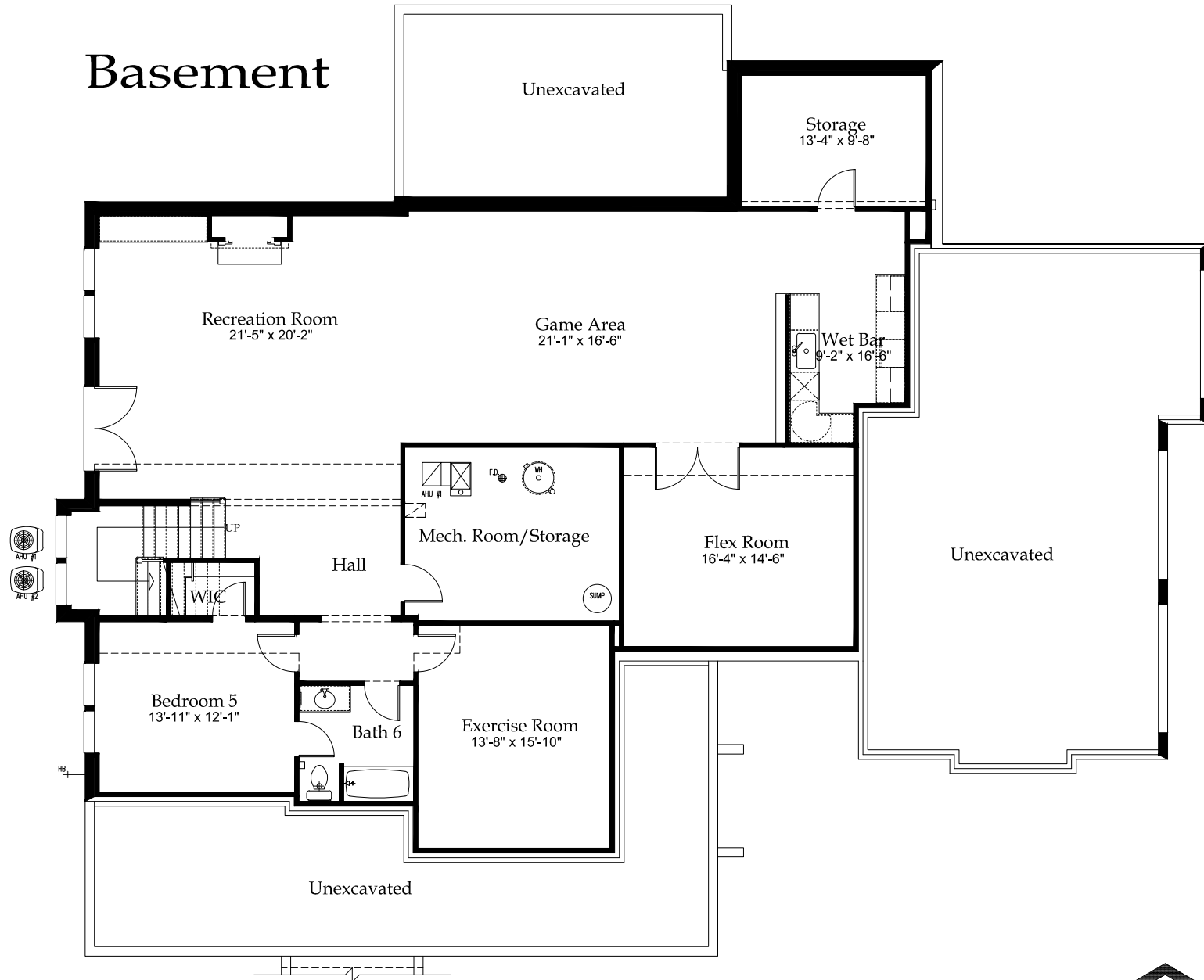
6147 Farver Road

© 2018 Fisher Custom Homes



In the interest of continuous improvements and to meet changing market conditions, we reserve the right to modify plans, dimensions, specifications or products without notice or obligation.

Basement



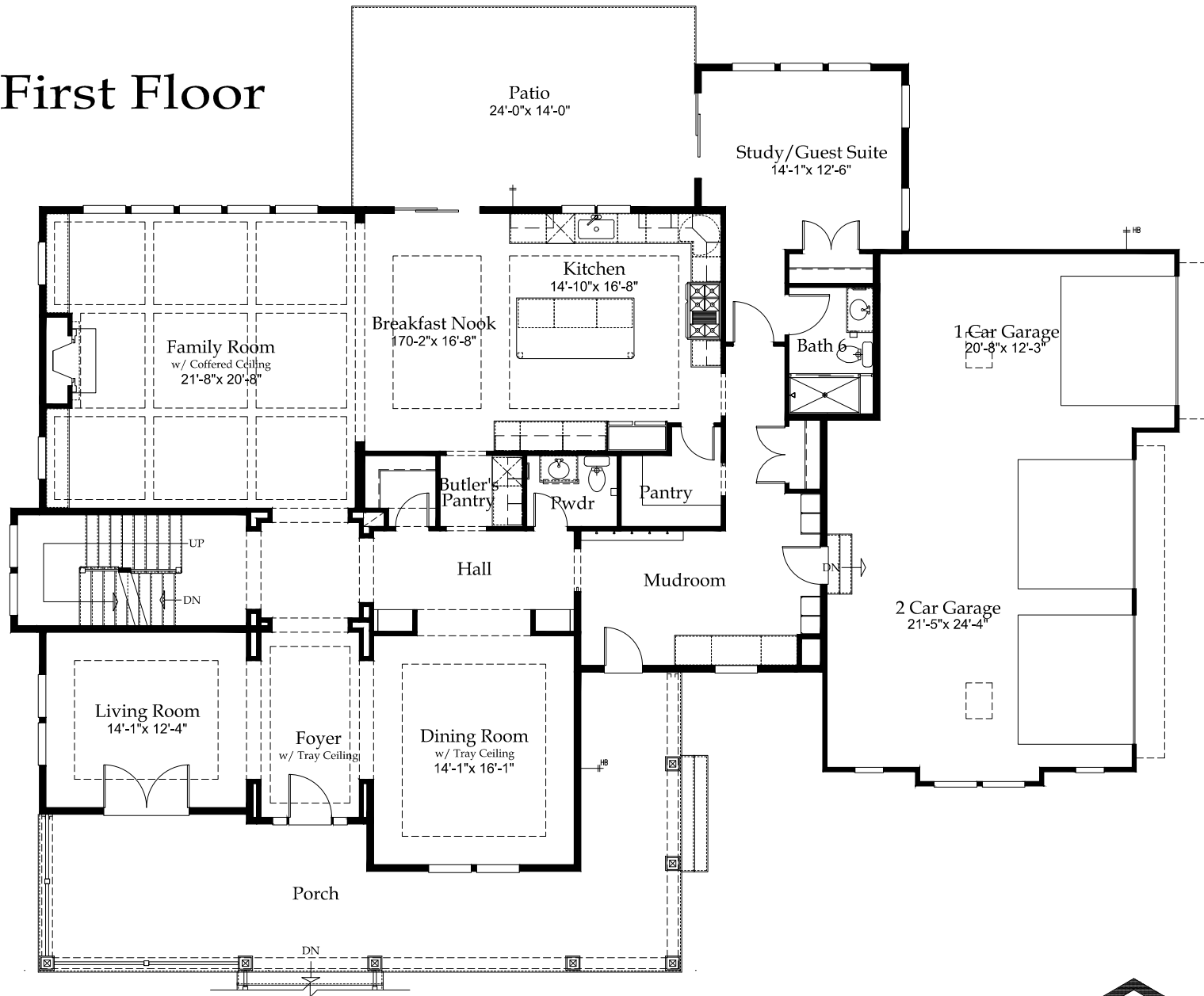
6147 Farver Road

© 2018 Fisher Custom Homes



In the interest of continuous improvements and to meet changing market conditions, we reserve the right to modify plans, dimensions, specifications or products without notice or obligation.

First Floor



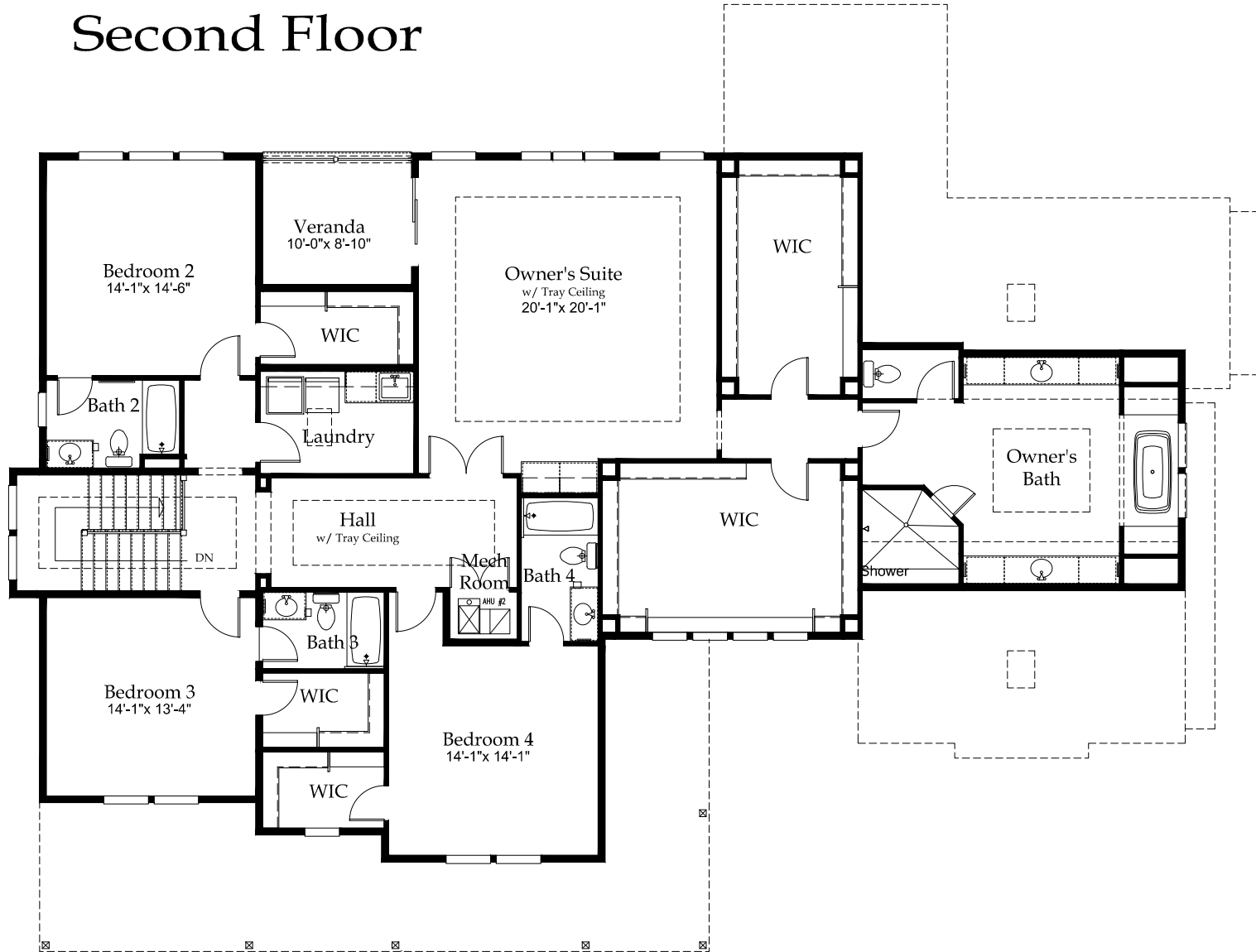
6147 Farver Road

© 2018 Fisher Custom Homes



In the interest of continuous improvements and to meet changing market conditions, we reserve the right to modify plans, dimensions, specifications or products without notice or obligation.

Second Floor



6147 Farver Road

© 2018 Fisher Custom Homes



In the interest of continuous improvements and to meet changing market conditions, we reserve the right to modify plans, dimensions, specifications or products without notice or obligation.