



## Front Elevation

BASEMENT 1647 SQ.FT.  
 FIRST FLOOR 2100 SQ.FT.  
 SECOND FLOOR 2463 SQ.FT.  
 TOTAL: 6210 SQ.FT.

### The Mills

© 2013 Fisher Custom Homes



*In the interest of continuous improvements and to meet changing market conditions, we reserve the right to modify plans, dimensions, specifications or products without notice or obligation.*



## Front Elevation

BASEMENT 1647 SQ.FT.  
FIRST FLOOR 2143 SQ.FT.  
SECOND FLOOR 2463 SQ.FT.  
TOTAL: 6253 SQ.FT.

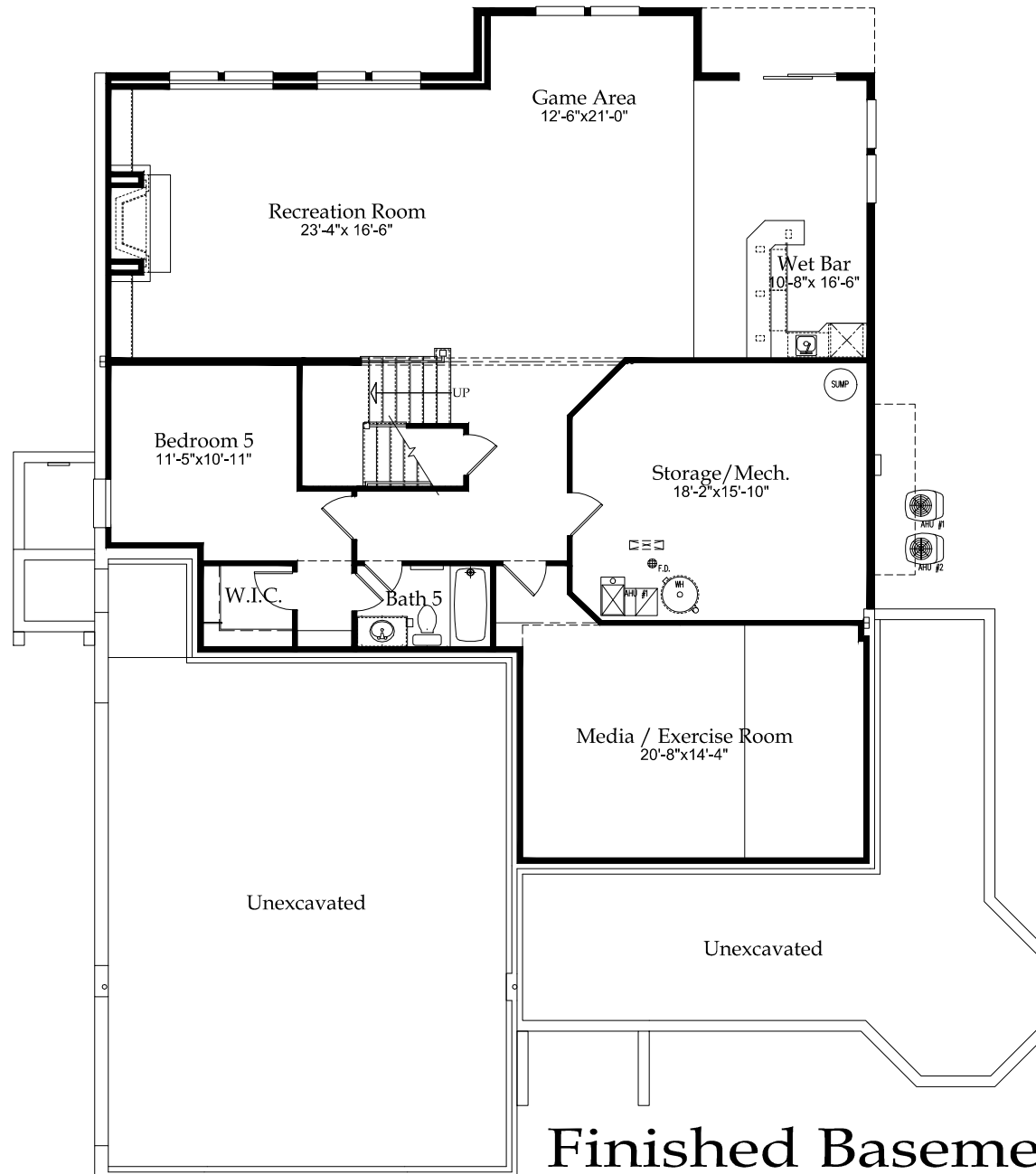


## The Mills

© 2013 Fisher Custom Homes



*In the interest of continuous improvements and to meet changing market conditions, we reserve the right to modify plans, dimensions, specifications or products without notice or obligation.*



## Finished Basement

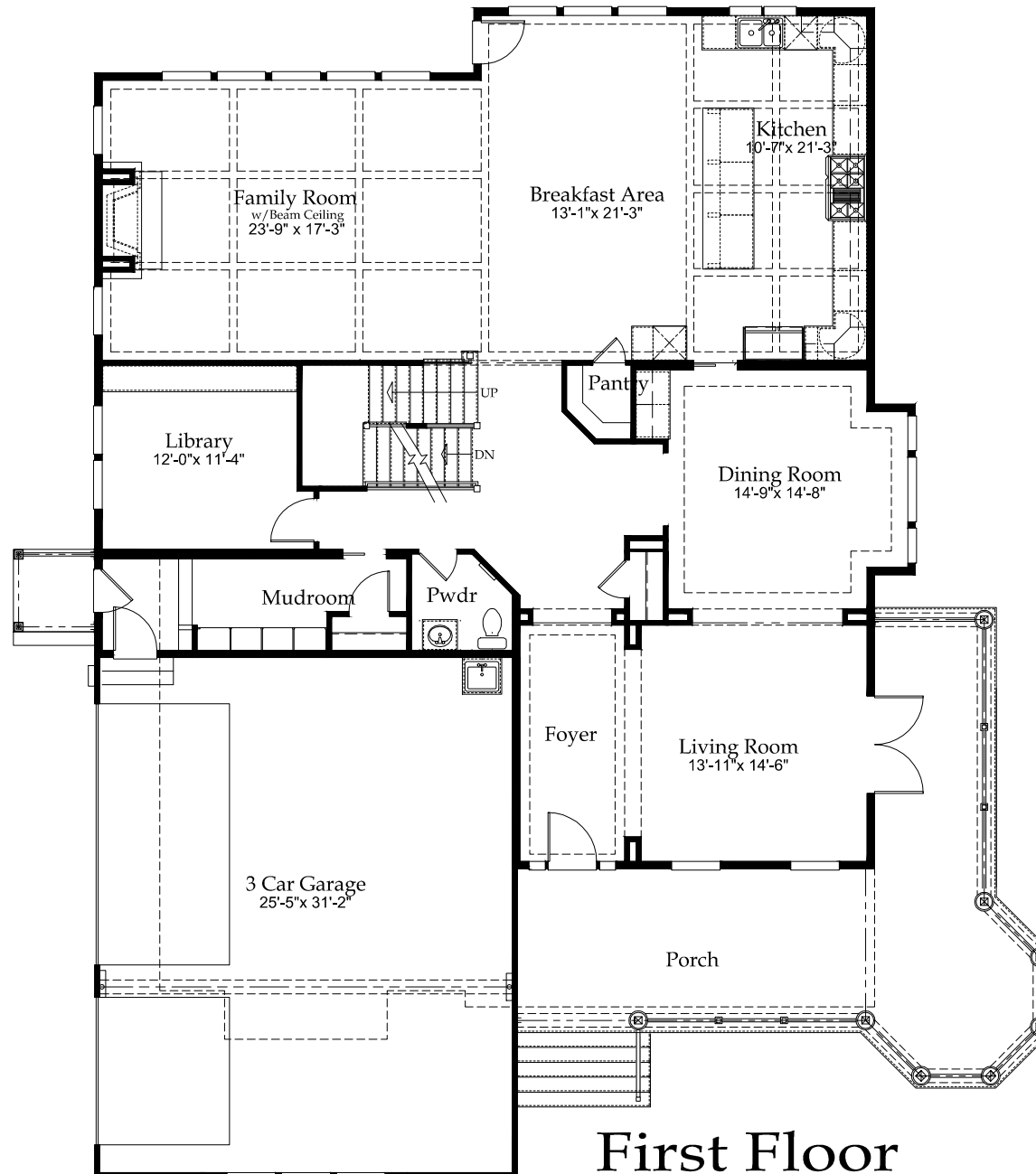


The Mills

© 2013 Fisher Custom Homes



*In the interest of continuous improvements and to meet changing market conditions, we reserve the right to modify plans, dimensions, specifications or products without notice or obligation.*



First Floor

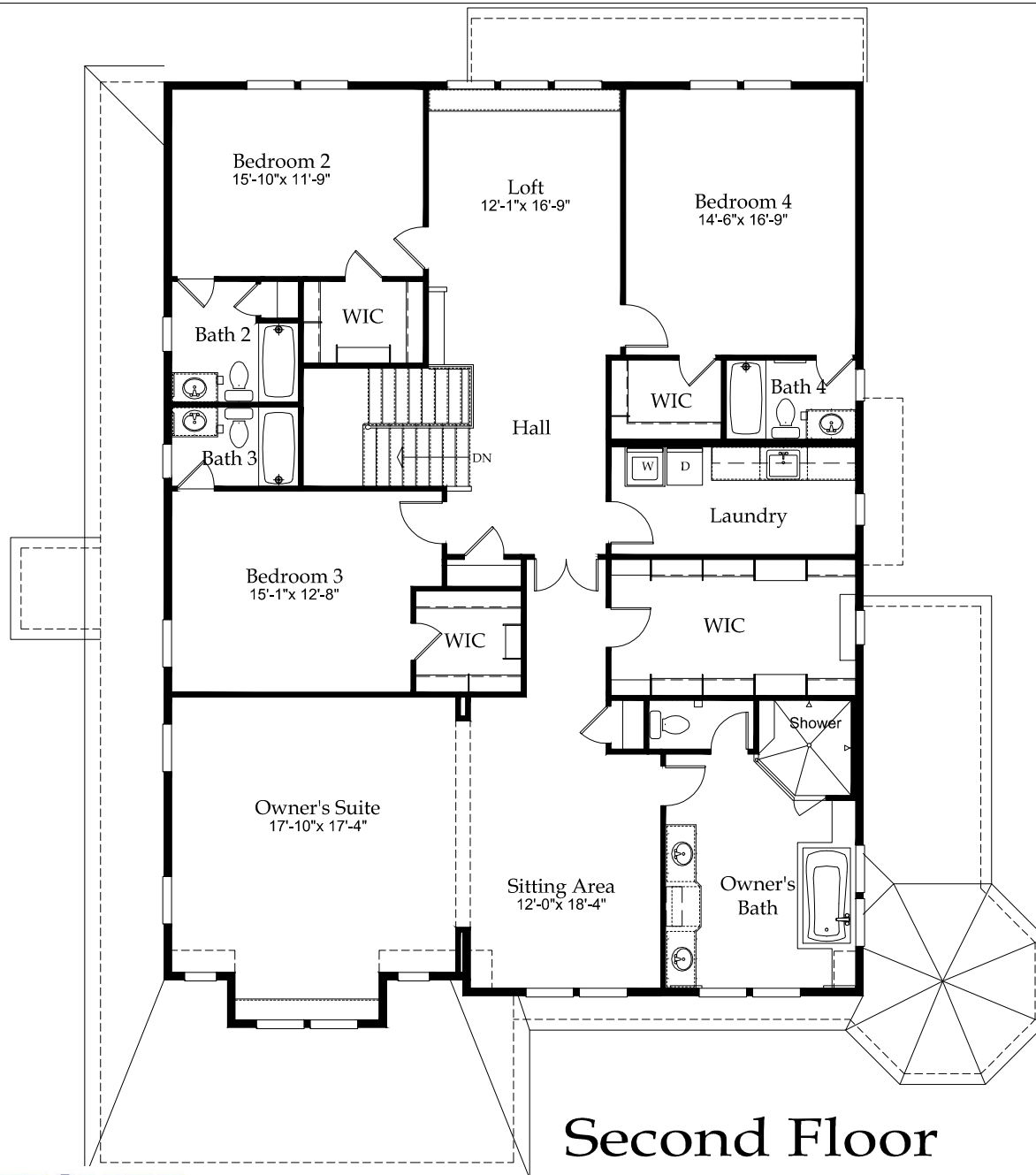


The Mills

© 2013 Fisher Custom Homes



*In the interest of continuous improvements and to meet changing market conditions, we reserve the right to modify plans, dimensions, specifications or products without notice or obligation.*



## Second Floor



### The Mills

© 2013 Fisher Custom Homes



*In the interest of continuous improvements and to meet changing market conditions, we reserve the right to modify plans, dimensions, specifications or products without notice or obligation.*