



Front Elevation

BASEMENT 1289 SQ.FT.
FIRST FLOOR 1647 SQ.FT.
SECOND FLOOR 1834 SQ.FT.
TOTAL: 4770 SQ.FT.



205 Elm St

© 2017 Fisher Custom Homes



In the interest of continuous improvements and to meet changing market conditions, we reserve the right to modify plans, dimensions, specifications or products without notice or obligation.



Front Elevation

BASEMENT 1289 SQ.FT.
FIRST FLOOR 1647 SQ.FT.
SECOND FLOOR 1834 SQ.FT.
TOTAL: 4770 SQ.FT.

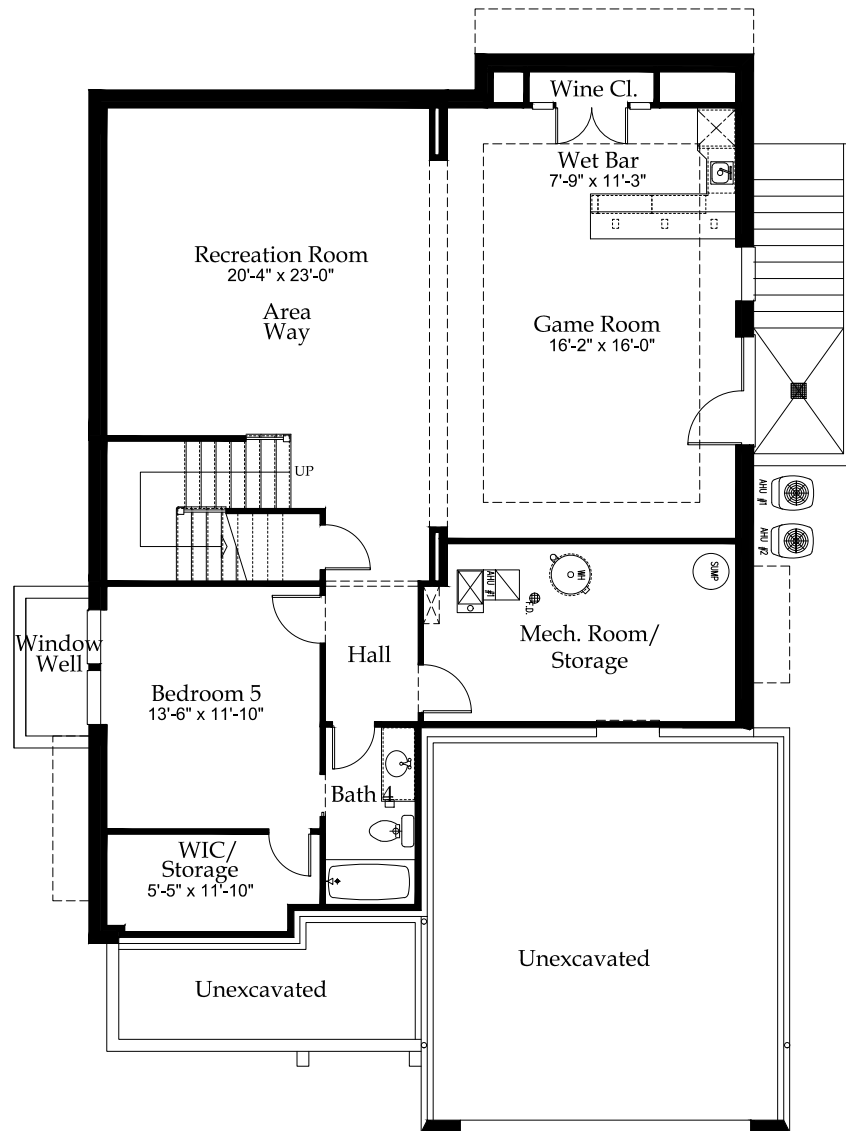


205 Elm St

© 2017 Fisher Custom Homes



In the interest of continuous improvements and to meet changing market conditions, we reserve the right to modify plans, dimensions, specifications or products without notice or obligation.



Basement

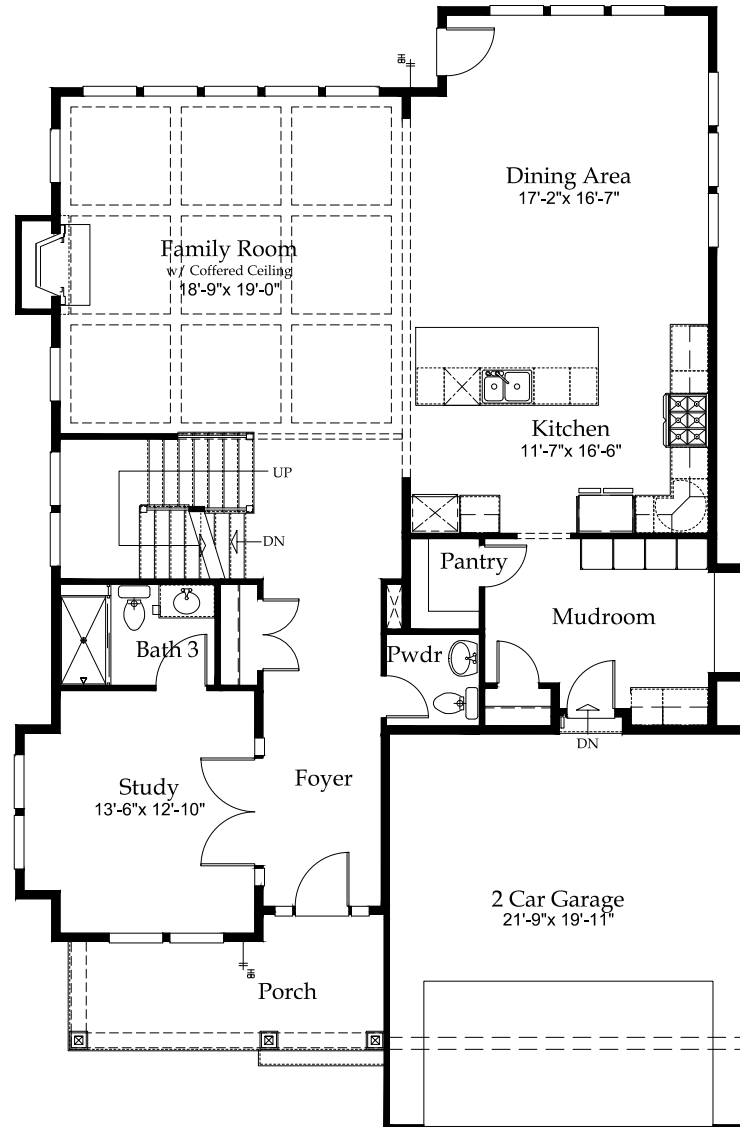


205 Elm St

© 2017 Fisher Custom Homes



In the interest of continuous improvements and to meet changing market conditions, we reserve the right to modify plans, dimensions, specifications or products without notice or obligation.



First Floor

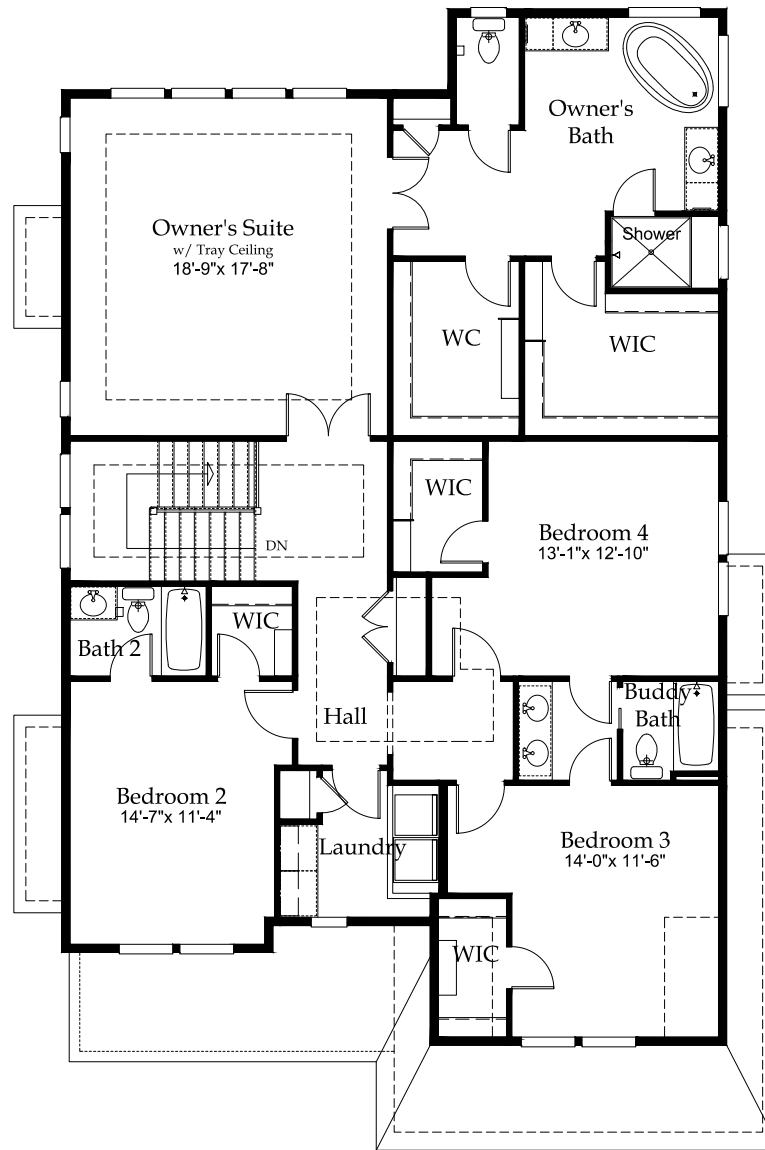


205 Elm St

© 2017 Fisher Custom Homes



In the interest of continuous improvements and to meet changing market conditions, we reserve the right to modify plans, dimensions, specifications or products without notice or obligation.



Second Floor



205 Elm St

© 2017 Fisher Custom Homes



In the interest of continuous improvements and to meet changing market conditions, we reserve the right to modify plans, dimensions, specifications or products without notice or obligation.